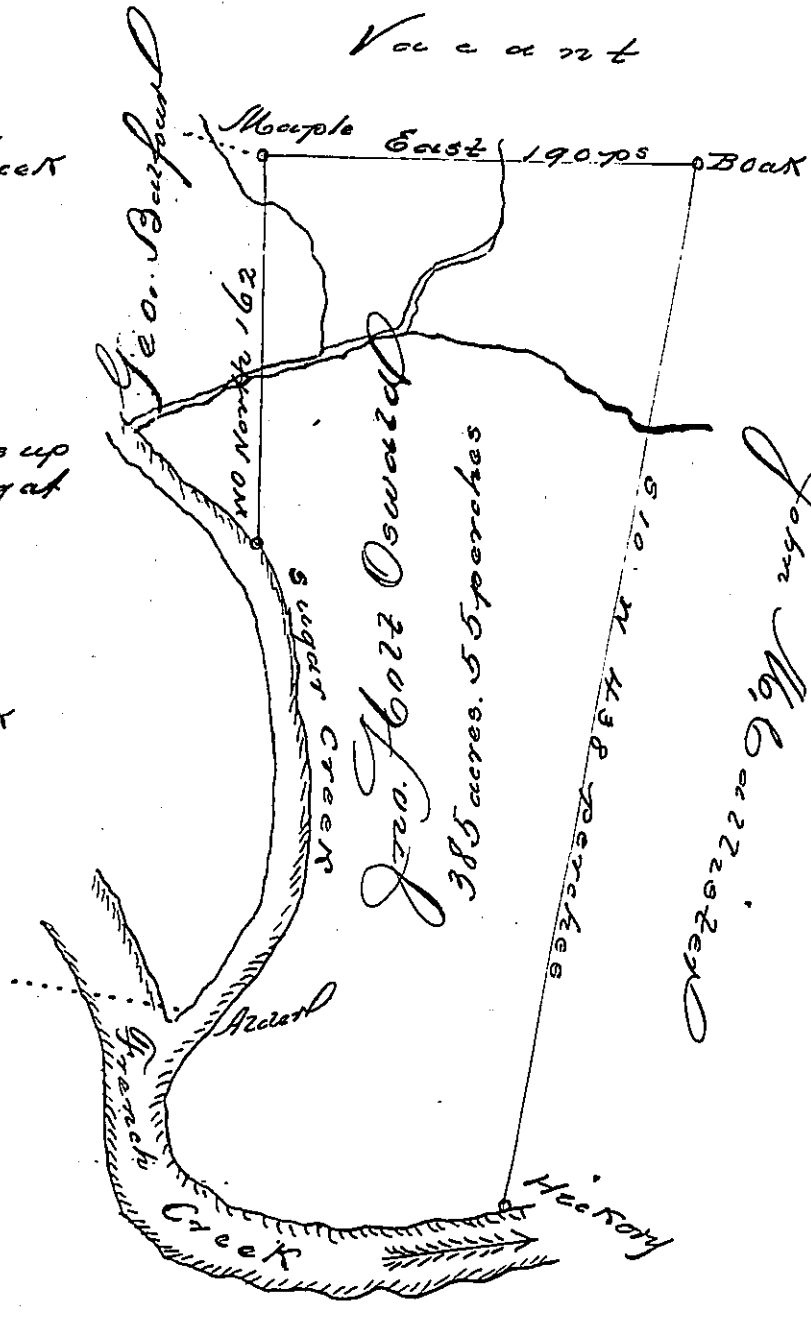


Vacant

No. 3

Courses up French Creek
 Beginning at a Hickory
 S. 70. W. 18 perches
 S. 83. W. 50 yds.
 N. 70. W. 74 perches
 North 42 perches

The courses and distances up
 Big Sugar Creek beginning at
 an old oak
 N. 27. E. 46 perches
 N. 34 1/2 E. 48 perches
 N. 1. E. 34 perches
 N. 6. W. 40 perches
 N. 17. W. 68 ps to a W Oak



The above is a draught of a Tract of Land surveyed the 14 day of April 1795. by virtue of Improvement for Geo Holtz Oward, effected the 12 day of August 1793. containing 385 acres and 55 perches and the usual allowance, situate on French Creek in District No 3, and Sugar Creek the larger

Ben Szokely D. J.

To
 Daniel Broadhead Esqr.
 J. G.

IN TESTIMONY that the above is a copy of the original remaining on file in the Department of Internal Affairs of Pennsylvania, made conformably to an Act of Assembly approved the 16th day of February, 1833, I have hereunto set my Hand and caused the Seal of said Department to be affixed at Harrisburg, this fourth day of June, 1901.

Jameson Pitta
 Secretary of Internal Affairs.